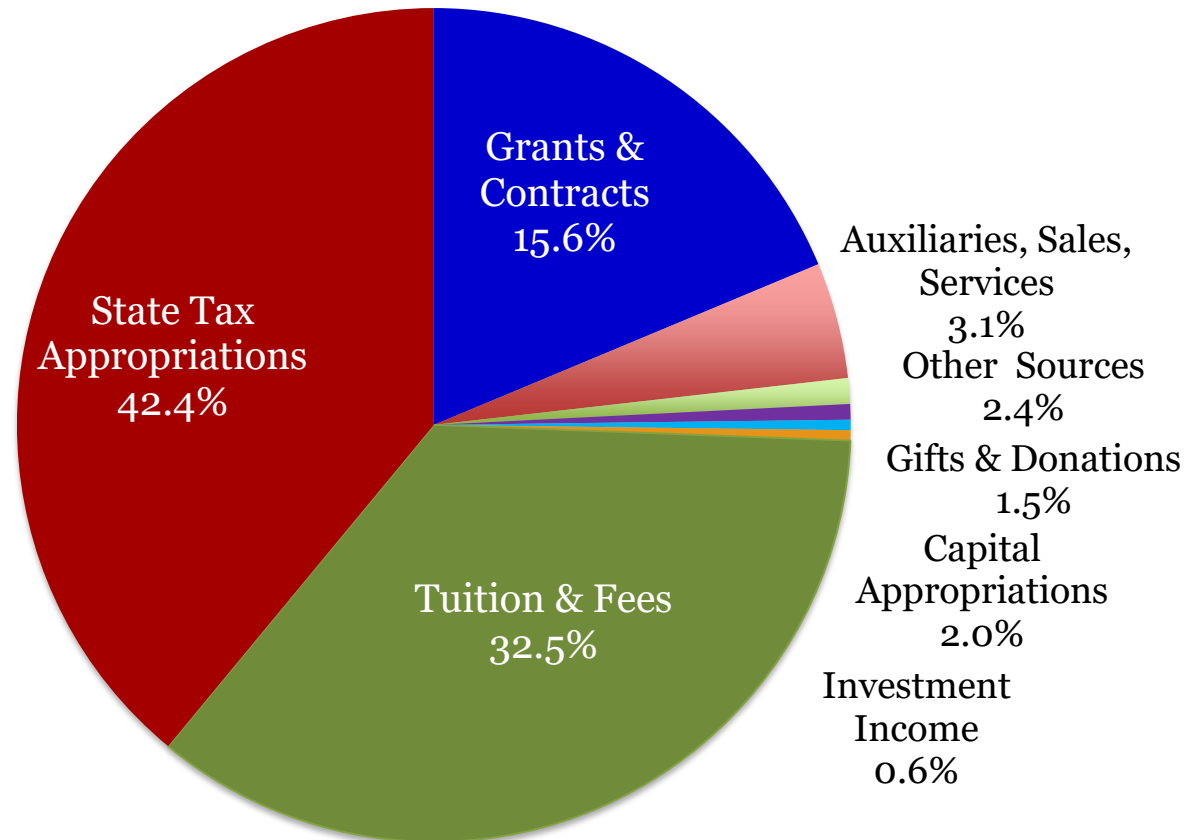




Board of Trustees 2018-19 Budget Reports

Salt Lake Community College

2019 Total Operating Budget (All Funds)

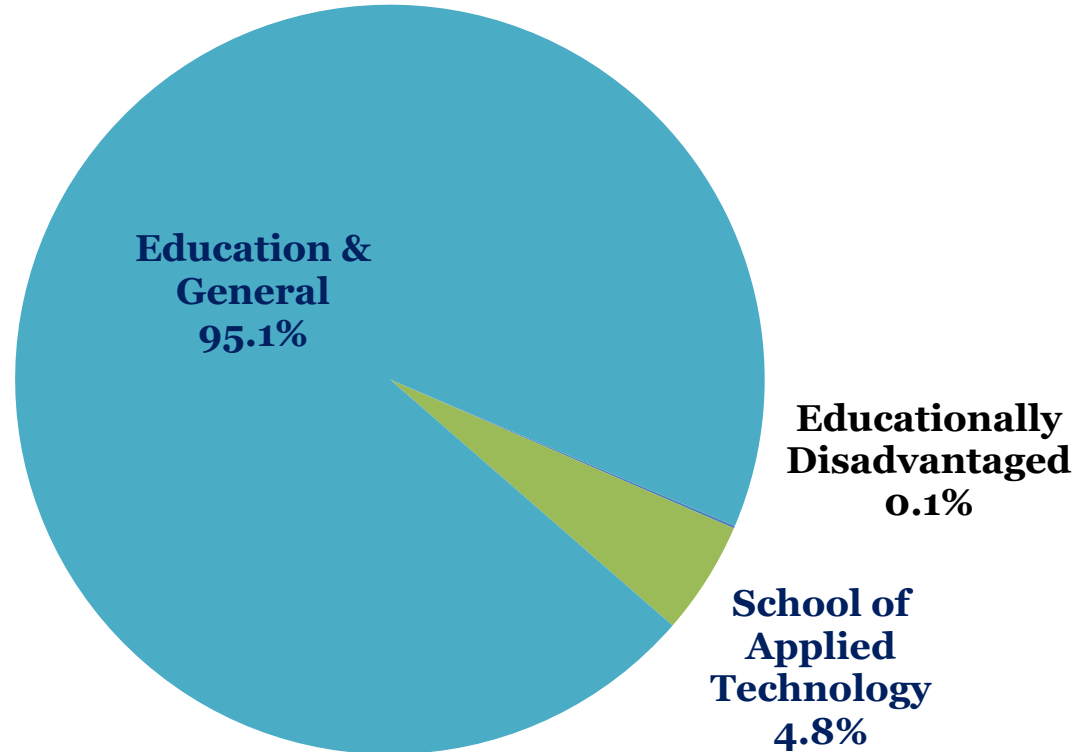


Total Revenue Budget: \$247,876,600

SALT LAKE COMMUNITY COLLEGE

2019 APPROPRIATED OPERATING BUDGET BY LINE ITEM

E & G:	\$155,063,600
SAT:	\$ 7,875,000
Ed Dis:	\$ <u>178,400</u>
Total:	\$163,117,000

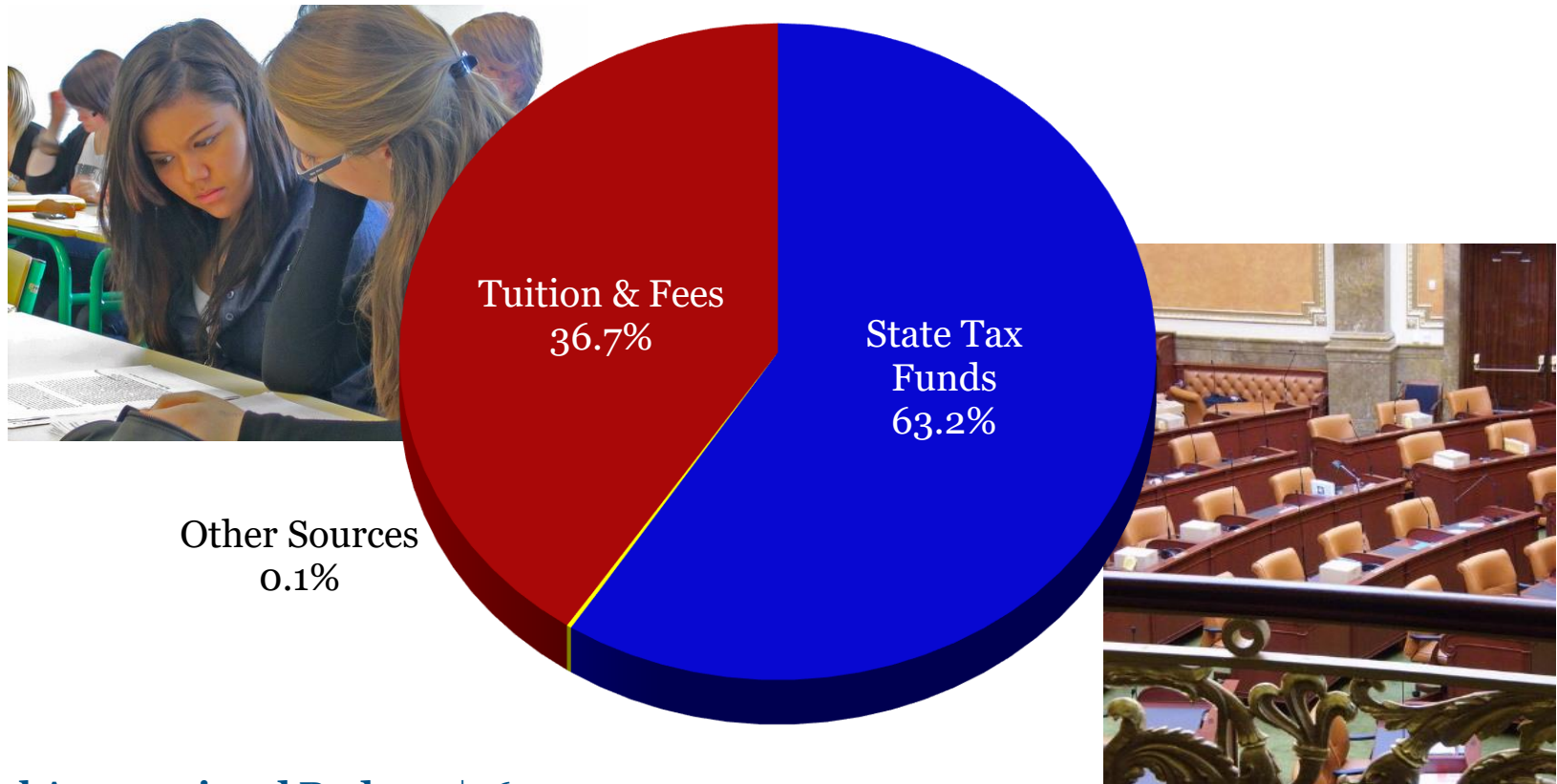


Total Appropriated Budget: \$163,117,000



SALT LAKE COMMUNITY COLLEGE

2019 APPROPRIATED OPERATING BUDGET BY REVENUE SOURCE

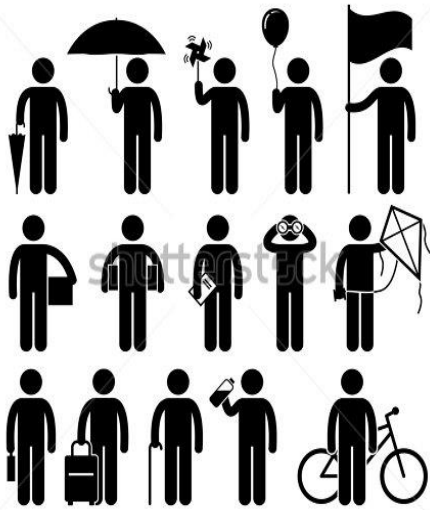


Total Appropriated Budget: \$163,117,000

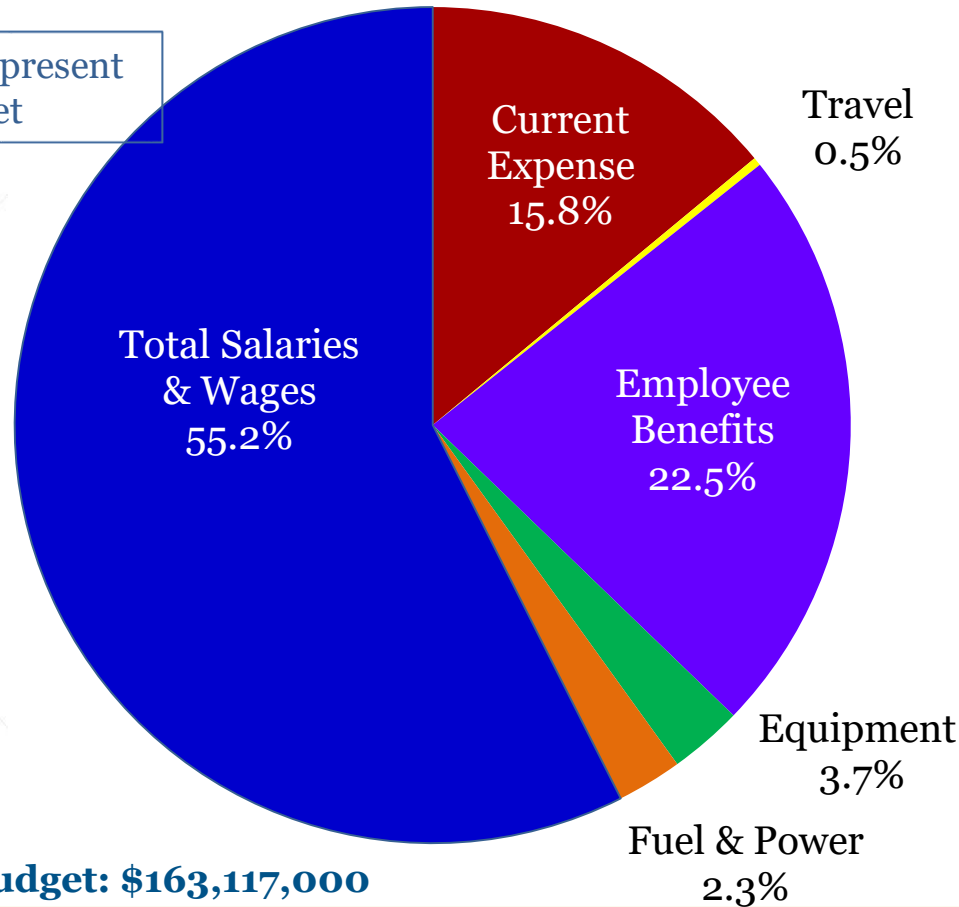
Salt Lake Community College

2019 Appropriated Operating Budget by Expenditure Category

Personnel related costs represent
77.7% of total budget



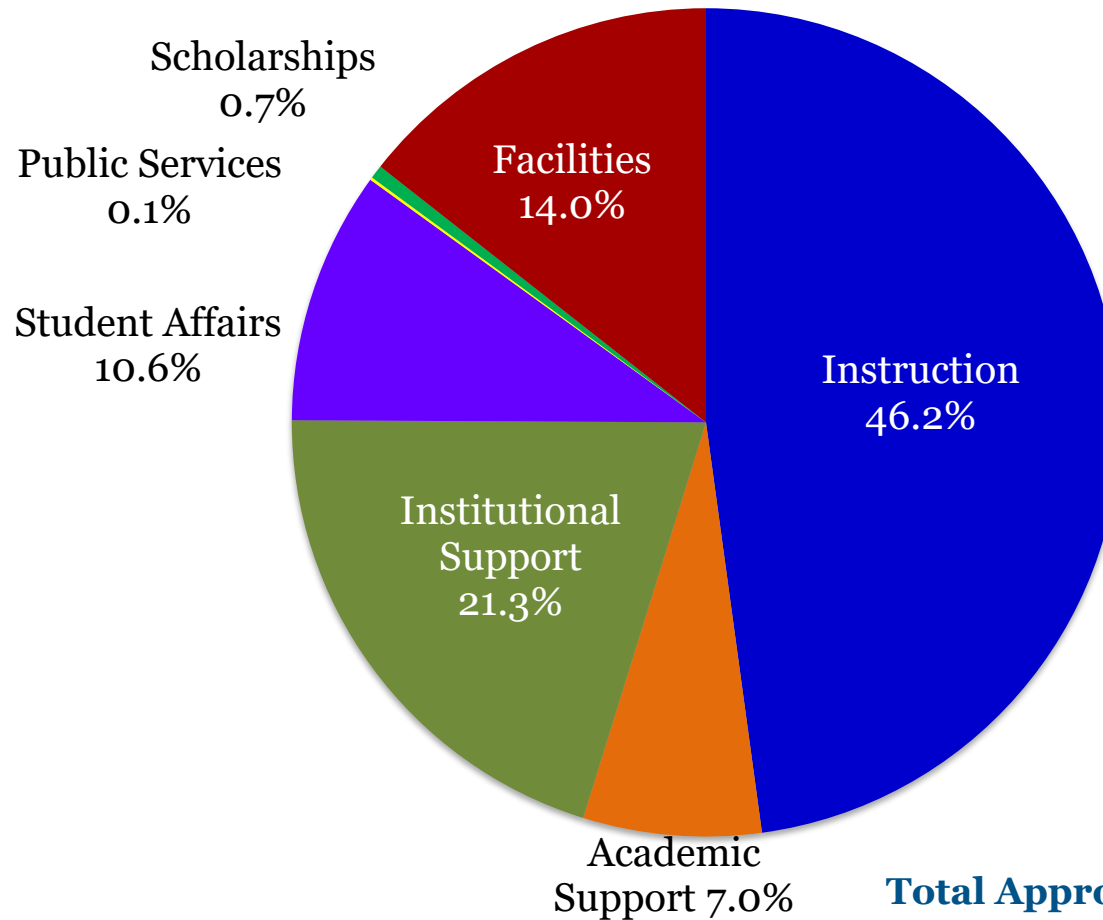
www.shutterstock.com · 244621195



Total Appropriated Budget: \$163,117,000

Salt Lake Community College

2019 Appropriated Operating Budget by Expenditure Function



Total Appropriated Budget: \$163,117,000

Salt Lake Community College

2019 New Appropriations Summary

* The Legislature appropriated funding equivalent to a 2.5% salary increase and an 4.5% health insurance rate increase to support rising health insurance costs.

* The State Board of Regents approved a 1.5% tuition increase for FY19: (1.5% first-tier and 0% second-tier respectively); General student fees were increased \$6.25 per semester for full-time students.

* The Legislature also appropriated the following revenue:

Student Growth and Capacity Funds	\$833,000
Completion Funding	\$655,700
Workforce Education Funding	\$597,000
Performance Based Funding	\$409,300 (Ongoing via S.B. Regents)