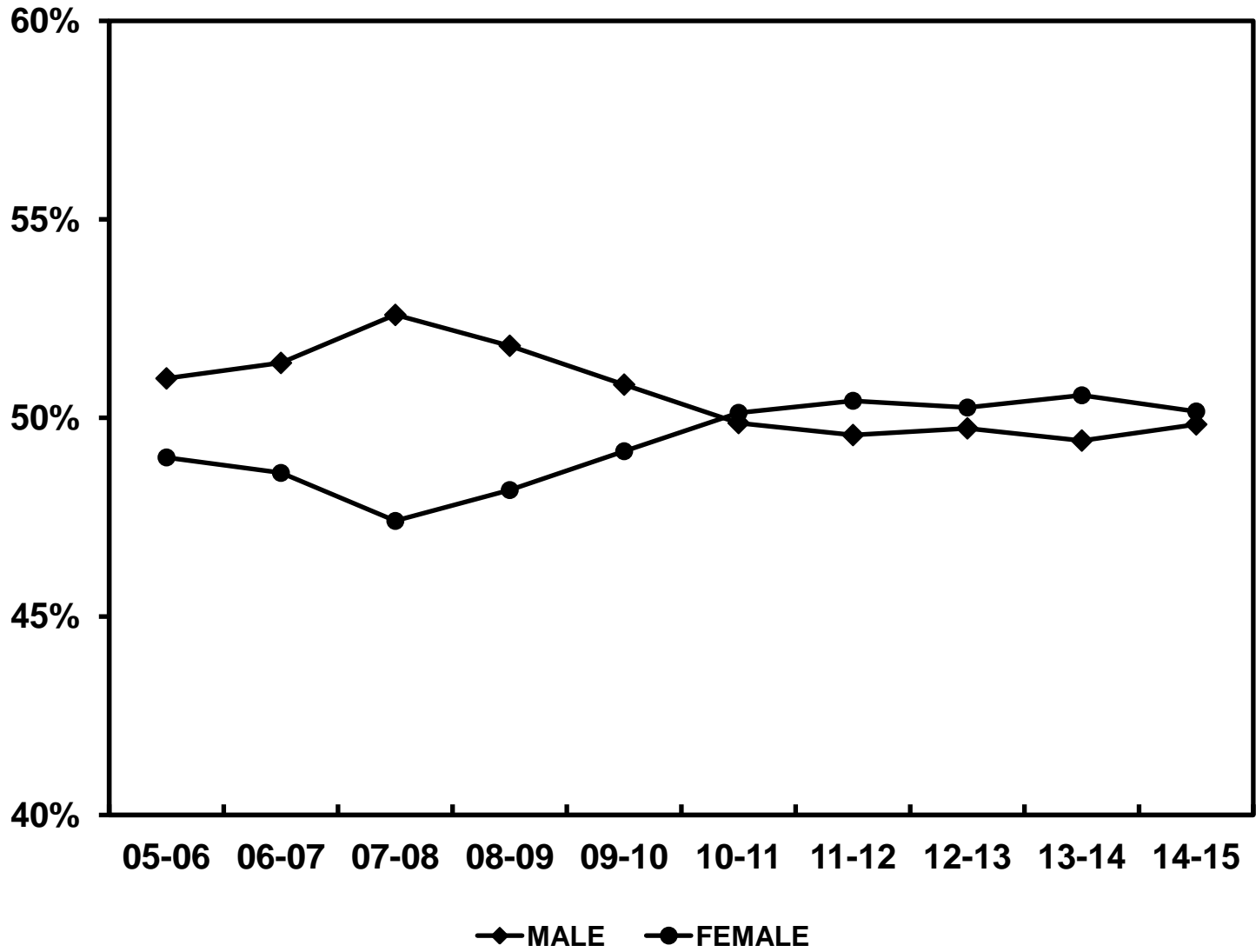


**GRAPH/TABLE 15.**

**MALE TO FEMALE RATIOS  
FALL SEMESTER**



<b>MALE TO FEMALE RATIOS FALL SEMESTER</b>										
	<b>05-06</b>	<b>06-07</b>	<b>07-08</b>	<b>08-09</b>	<b>09-10</b>	<b>10-11</b>	<b>11-12</b>	<b>12-13</b>	<b>13-14</b>	<b>14-15</b>
MALE	12528	12241	12530	12678	14094	14185	13404	13012	12583	12087
FEMALE	12039	11581	11294	11789	13629	14258	13637	13149	12873	12166
TOTAL	24567	23822	23824	24467	27723	28443	27041	26161	25456	24253
MALE	51.00%	51.39%	52.59%	51.82%	50.84%	49.87%	49.57%	49.74%	49.43%	49.84%
FEMALE	49.00%	48.61%	47.41%	48.18%	49.16%	50.13%	50.43%	50.26%	50.57%	50.16%

NOTE: Totals equal "Total of All Budget Related", not the "IPEDS" or the "Institution Total".

SOURCE: Utah Board of Regents' Official Reports, 2005-2006 to 2014-2015